

Play value

Children recognise at once that this „Family“ of carousels stands for father, mother and child, despite of their abstract design. The carousels can easily be set in motion, sitting on the disc by hand or being in an upright position by one's feet. The bent tubes serve as hand holds. Moreover, they can be used for gymnastic exercise. The carousels of the „Family“ line show their special nature mainly as complete installation with all three family members. Due to their formal design, they are very well suited for play areas in city centres and other public places in towns.



© Richter Spielgeräte GmbH 10/15

Design and Copyright

Fundamental characteristics

- dimensions corresponding to different age groups by different sizes of the carousels
- attractive design
- playful experience of the pirouette effect
- incentive for playing: friendly appearance, identification, different sizes
- movement: moving one's centre of gravity, turning

**Medium Spinner
Large Spinner**

Suitable

- for children from 4 years
- for public playgrounds
- nurseries
- school playgrounds
- pedestrian zones

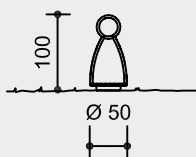


6.26401

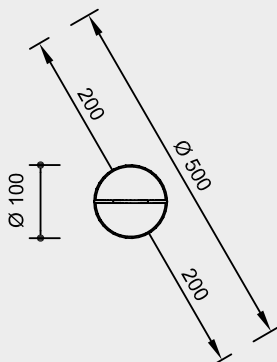
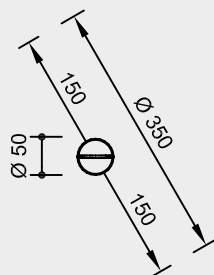
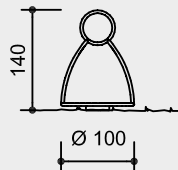


6.26402

**Order No. 6.26401
Medium Spinner**



**Order No. 6.26402
Large Spinner**



scale 1:100

Safety check according to EN 1176

Components

- 1 carousel each
- 1 foundation frame each

Installation information

Surfacing requirements
surfacing required as for critical fall
height of ≤ 1.00 m
(please refer to price list for more
detailed information)

Foundations

- Order No. 6.26401**
1 item 60 x 60 x 20 cm
excavation depth 60 cm
- Order No. 6.26402**
1 item 60 x 60 x 55 cm
excavation depth 60 cm

Attention:

**Exact measurements may vary, for
all installation dimensions refer to
current installation instructions.**
Technical changes reserved.

Technical information

equipment of stainless steel,
glass bead blasted

sturdy, welded substructure

ball bearing

mechanism with double low-maintenance, lacquered, water and sand proof



easy grip tubes

Order No. 6.26401 Ø 33.7 mm

Order No. 6.26402 Ø 42 mm

surfacing made of checker plate

foundation frame of steel

Dimensions

(small deviations possible)

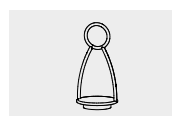
Order No. 6.26401

height 1.00 m
diameter 0.50 m
weight 45 kg

Order No. 6.26402

height 1.40 m
diameter 1.00 m
weight 70 kg

For more detailed explanation of the
quality characteristics see price list.



6.26401



6.26402